



## STUNNING FAMILY HOME

### Contact Agent

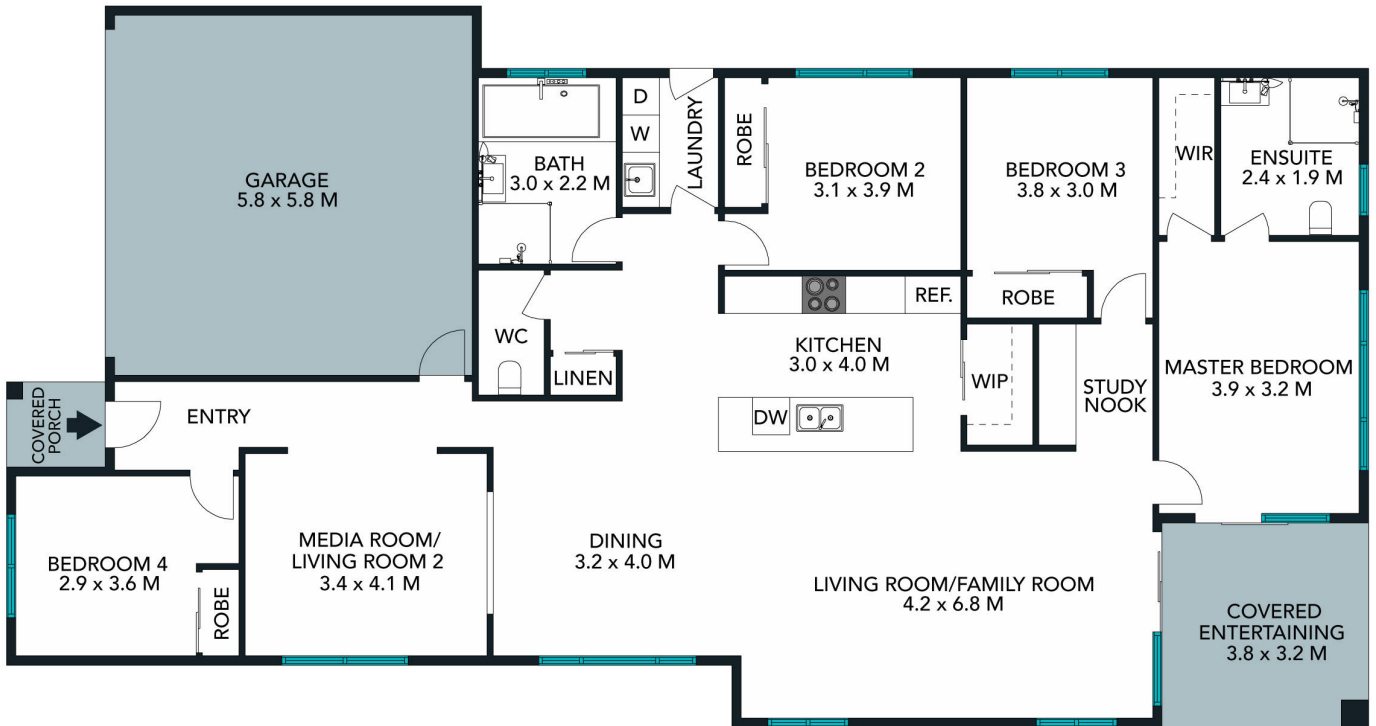
Greeted upon entry by generous, sun-drenched interiors & located in a prestigious estate, this master built home sets a new standard in modern luxury. With premium features throughout, walk-in pantry, double garage with internal access, the open plan living areas flow effortlessly into an incredible kitchen featuring stone bench tops and waterfall edges, to the ultimate outdoor entertainment space. Enjoy the beauty of a private, generous block, all just minutes from the local schools, shops and ... for more information please visit our website

Disclaimer: In preparing this brochure, Coleman Estate Agents and it's related franchisees has relied in good faith upon information provided by others and has made all reasonable efforts to ensure that the information is correct. The accuracy of the information provided to you (whether written or verbal) cannot be guaranteed. If you are considering this property, you must make all enquiries necessary to satisfy yourself that all information is accurate.



**Coleman Estate Agents Toukley**

YEIY7Q4N@mail.snug.com



TOTAL LAND AREA : 480 SQM  
TOTAL LIVING AREA : 174 SQM

The floor plan is not to scale; measurements are indicative and in metres. Exterior elements are not in position. Plans should not be relied on. Interested parties should make and rely on their own enquiries.



171 Johns Road, Wadalba  
stonerealestate.com.au

Produced by DIAKRIT