

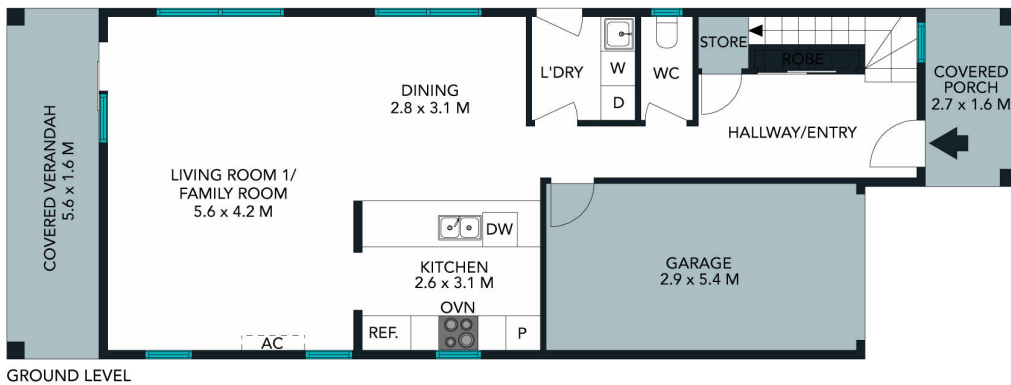
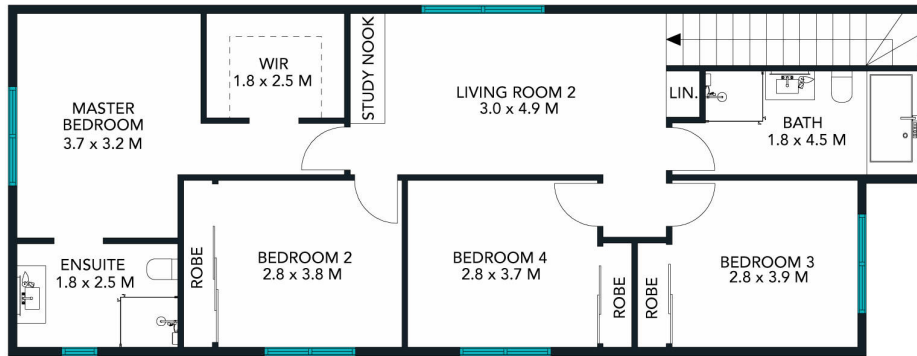


## **LEASED FIRST OPEN - \$480.00 PER WEEK**

### Contact Agent

This one year old four bedroom contemporary home offers spacious living and oversized master bedroom all located in a quiet and private location - One year old modern four bedroom home with built-ins to all - Oversized master bedroom with ensuite & walk in robe - Spacious open plan living downstairs with second living upstairs - Modern kitchen with dishwasher and gas stove top - Reverse cycle air conditioning and third toilet downstairs - Single lock up garage with internal access - Fully fenced... for more information please visit our website

Disclaimer: In preparing this brochure, The Coleman Team and it's related franchisees has relied in good faith upon information provided by others and has made all reasonable efforts to ensure that the information is correct. The accuracy of the information provided to you (whether written or verbal) cannot be guaranteed. If you are considering this property, you must make all enquiries necessary to satisfy yourself that all information is accurate.



TOTAL LAND AREA : 313 SQM  
TOTAL LIVING AREA : 150 SQM

The floor plan is not to scale; measurements are indicative and in metres. Exterior elements are not in position. Plans should not be relied on. Interested parties should make and rely on their own enquiries.

**13 Evergreen Parade, Woongarra**  
stonerealestate.com.au

Produced by DIAKRIT

